



FEATURES

- Non-resettable mechanical totalizer
- Optional pulse output
- Rugged construction
- Accurate and economical

APPLICATIONS

- Cooling water monitoring
- Industrial fluid control
- Water treatment
- Wastewater treatment

GENERAL INFORMATION

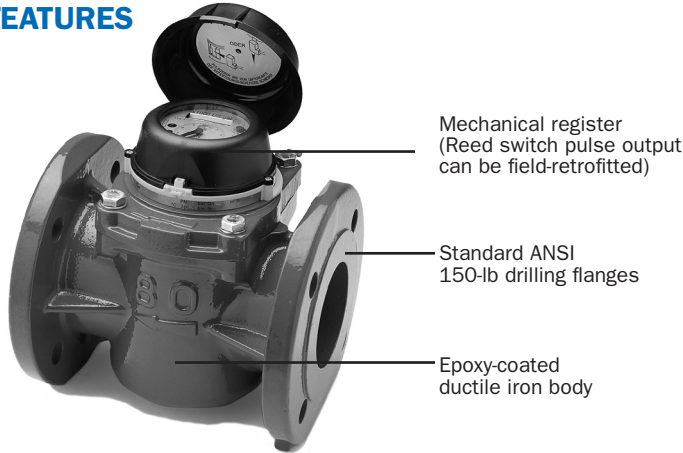
The WP-Series turbine meters offer accurate, economical reading of high flows with low head loss. The horizontal-axis turbine drives a vertical shaft, which is magnetically coupled to the sealed register.

Bodies are manufactured of tough ductile iron and epoxy-coated for protection. Removal of the top flange brings out all parts for inspection or repair.

In addition to mechanical totalizing, registers can be equipped with magnetic pulse reed sensors. These sensors are well suited for remote totalizing, pacing of electronic metering pumps, and water treatment applications.

Compatible SeaMetrics controls include the PT35 pulse timer, the PD10 pulse divider, and the PS40 pulse splitter for running multiple pulse-responsive devices (e.g. pumps, counter timers and remote totalizers) with a single WP meter.

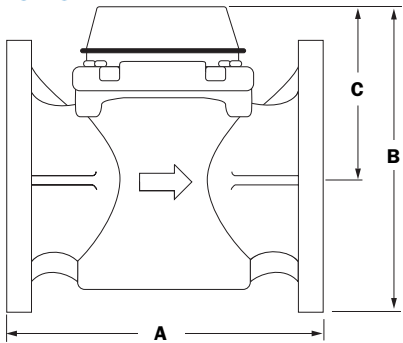
FEATURES



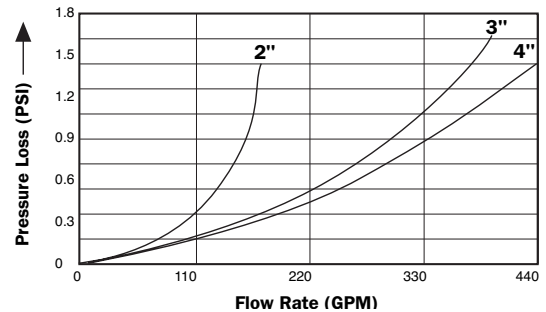
SPECIFICATIONS

Power				
Materials	Meter Body	Cast iron, epoxy coating		
	Turbine Insert	Engineered thermoplastic		
	Register Plate	Die-cast bronze		
	Shafts	Stainless steel		
	Drive Magnet	Ceramic permanent		
	Bearings	Sapphire		
Maximum Pressure	150 psi (10 bar)			
Maximum Temperature	120° F (50° C)			
Accuracy	+/- 1% of reading			
Reed Switch	100 mA @ 24 Vdc			
Flow Range (GPM)	2"	3"	4"	
	Minimum	2.5	2.6	4.0
	Max. Continuous	150	400	550
	Max. Transient	300	650	1100

DIMENSIONS



	2"	3"	4"
A	7.80"	8.88"	9.88"
B	7.75"	9.13"	9.60"
C	4.80"	5.50"	5.50"



HOW TO ORDER

MODEL	SIZE	OPTIONS	PULSE RATE
WP	2" = -200 3" = -300 4" = -400	Pulse Output/Reed Switch = -53 (Select Pulse Rate)	(Required with Option -53 Only) 100 Gal/Pulse = 100G 1000 Gal/Pulse = 1000G
WP			
ACCESSORIES			
Pulse Timer = PT35	Pulse Divider = PD10	Pulse Splitter = PS40	

CONTACT YOUR SUPPLIER